

PART OF S.W. 1/4 OF N.W. 1/4 OF SECTION 3, T.5N., R.1W., S.L.B. & M.
BLOCKS 11 & 12, NELSON PARK ADDITION

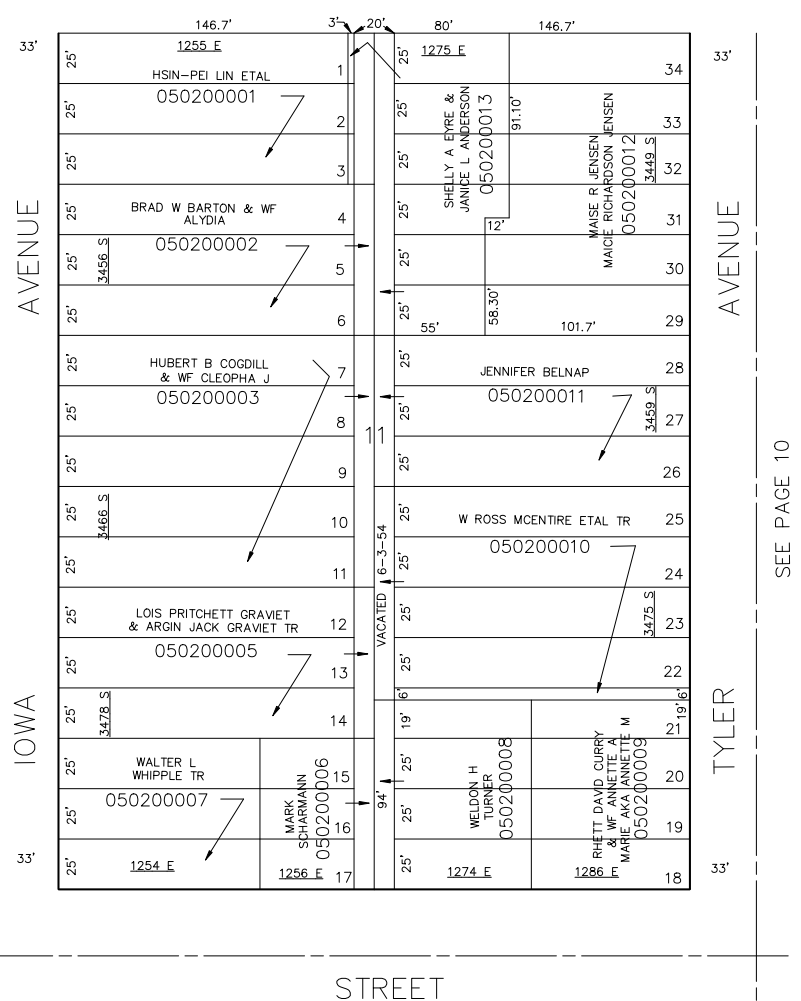
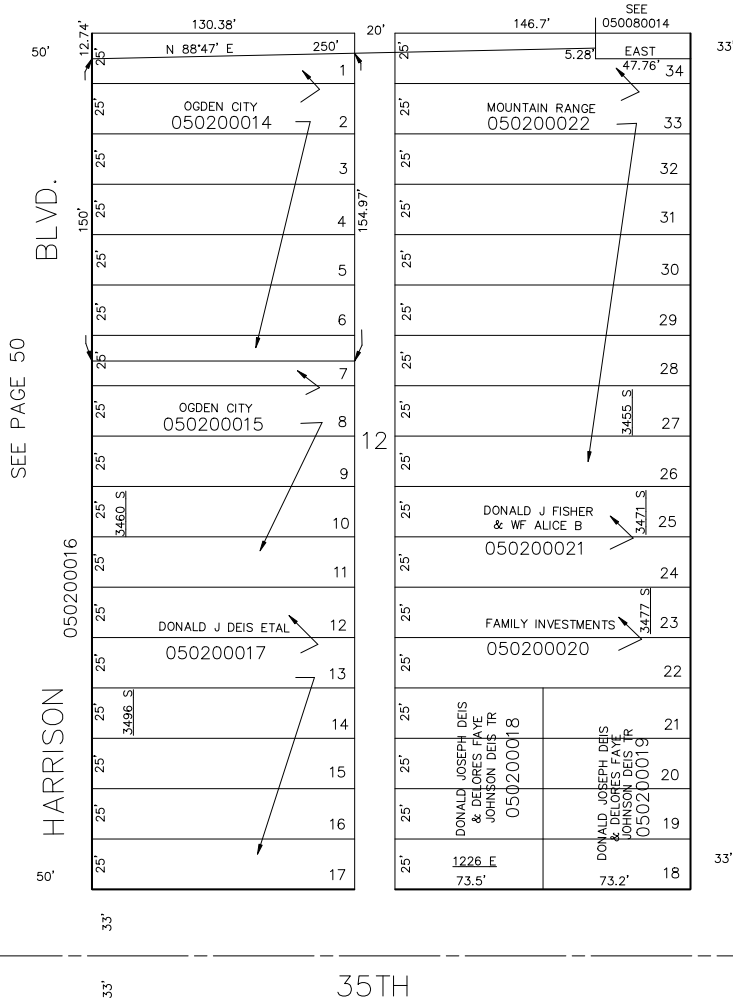
IN OGDEN CITY
SCALE 1" = 50'

TAXING UNIT: 25

20

SEE PAGE 8-3

SEE PAGE 8-2



FOR COMPLETE ENG DATA SEE
ORIGINAL DEDICATION PLAT IN
BOOK 5, PAGE 11 OF RECORDS.